

1221 AVENUE OF THE AMERICAS

PREMISES LOCATED ON
AVENUE OF THE AMERICAS
BETWEEN WEST 48TH & 49TH STREETS



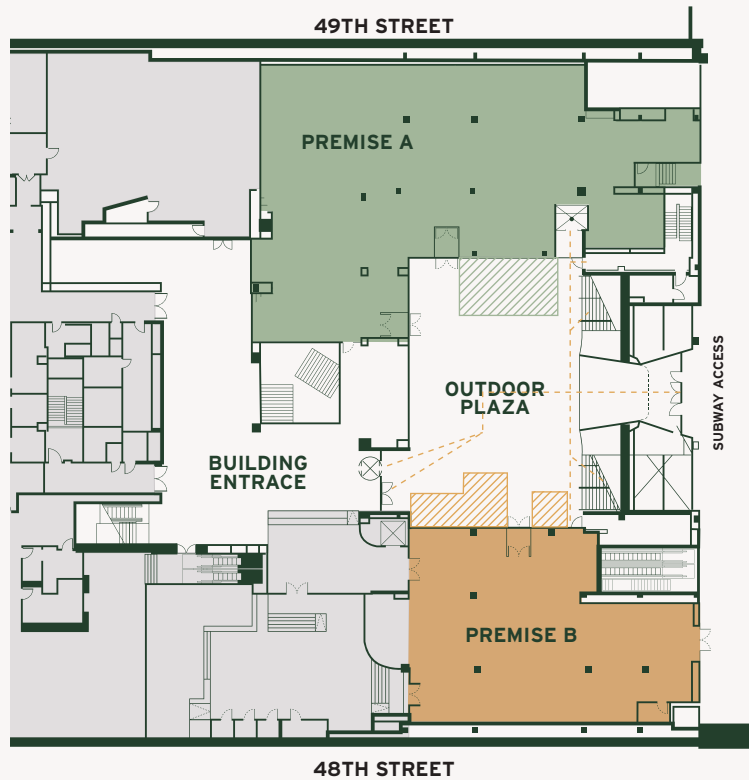
CBRE

ROCKEFELLER
GROUP

ERIC GELBER
eric.gelber@cbre.com
212.984.7127

JORDAN KAPLAN
jordan.kaplan@cbre.com
212.984.6576

JESSICA TAUBER
jessica.tauber@cbre.com
212.984.8279



Plaza Level



Concourse



■ Premise A
■ Premise B

**PREMISE A:
RESTAURANT OPPORTUNITY**

SIZE:
 Plaza Level: 7,283 SF
 Concourse: 5,709 SF
 Total: 12,992 SF

CEILING HEIGHTS:
 Plaza Level: 13'1" slab to slab
 Concourse: 13'3" slab to slab

FRONTAGE:
 North: 42'-0"
 West: 24'-0"

**PREMISE B:
CAFE/ RETAIL OPPORTUNITY**

SIZE:
 Plaza Level: 3,811 SF

CEILING HEIGHTS:
 Plaza Level: 13'1" slab to slab

FRONTAGE:
 50'-0"



Premise A: Restaurant Opportunity

COMMENTS

- Located at the base of 2.6M SF Class A office tower at the crossroads of Rockefeller Center, Fifth Avenue, and Times Square
- A rare opportunity for visibility on Sixth Avenue
- Direct access to the Rockefeller Center Concourse and B, D, F, M subway lines, which serve over 18 million riders annually
- Presents a rare high grossing restaurant opportunity
- Licensed outdoor seating
- Landlord will deliver black-iron venting connection point to Premise A

EXISTING TENANCY AT 1221 AVENUE OF THE AMERICAS

Del Frisco's
DOUBLE EAGLE STEAKHOUSE

OCEANA

CHIPOTLE

zibetto
ESPRESSO BAR

SiriusXM

WHITE & CASE

MUFG

DENTONS

NBC UNIVERSAL

MAYER|BROWN

ALLEN & OVERY

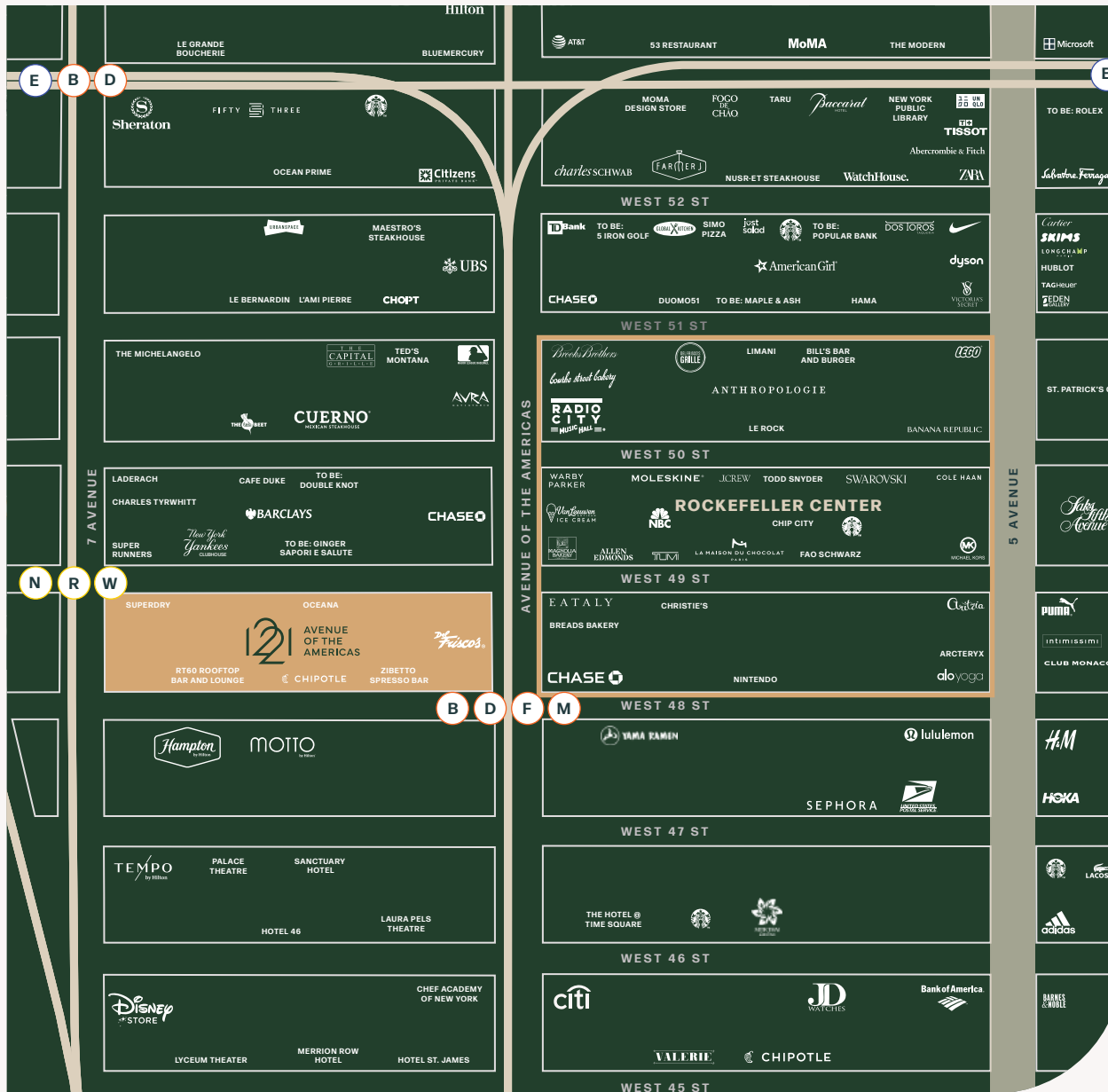


Premise B: Cafe/ Retail Opportunity

1221 AVENUE OF THE AMERICAS

CBRE

ROCKEFELLER GROUP



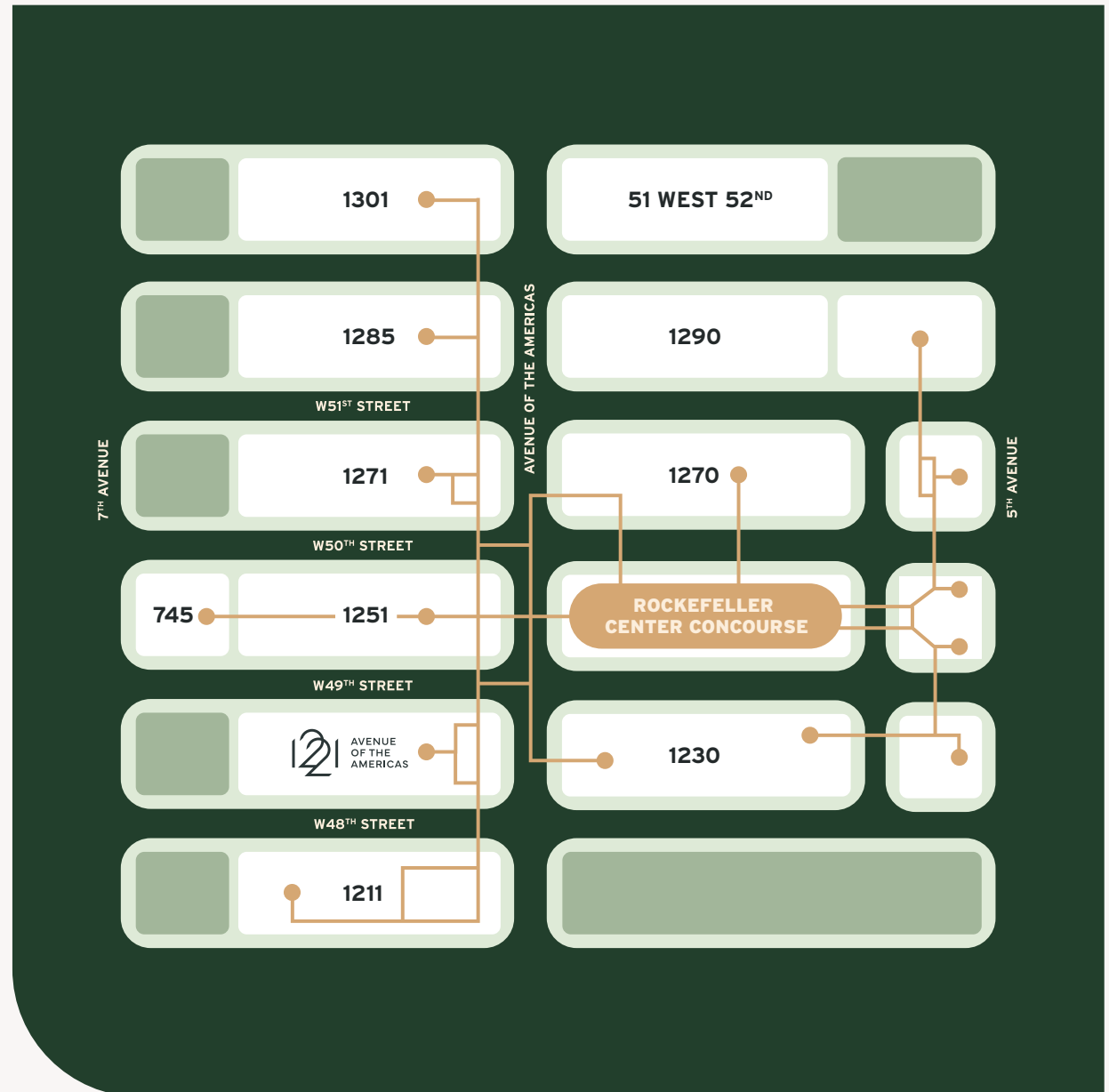
THE NEIGHBORHOOD

Located in the heart of Midtown, 1221 is perfect positioned amongst world class restaurants, retail, and cultural attractions.



THE CONCOURSE AT THE ROCKEFELLER CENTER

The Concourse offers direct subway access, but it's also a destination in its own right. A network of underground passageways connects every building within Rockefeller Center with numerous stores, restaurants and other conveniences, and with Rockefeller Plaza, as world-famous shopping and dining mecca.



CONTACT

ERIC GELBER

eric.gelber@cbre.com

212.984.7127

JORDAN KAPLAN

jordan.kaplan@cbre.com

212.984.6576

JESSICA TAUBER

jessica.tauber@cbre.com

212.984.8279